



INSTALLATION INSTRUCTIONS

For use with:

ES2-RM2EL2B-3 | ES2-RM2EL2U-3

WHAT'S IN THE BOX

- SWING TYPE EDGE LIT RUNNING MAN
- CANOPY KIT
- 3 PICTOGRAM INSERTS

WHAT YOU'LL NEED

- SCREWDRIVER / POWER DRILL
- WIRE CUTTERS
- WIRING SUPPLIES AS PER ELECTRICAL CODE

IMPORTANT

Before assembling your running man sign, please make sure that you carefully read through this instruction sheet. This unit must be installed by a qualified licensed electrician.

This sign is suitable for use in the following locations: indoor, dry or damp locations.

ATTENTION

Read and Follow All Safety Instructions:

- For Indoor use ONLY
- Do not let power cords touch hot surfaces.
- Do not install near gas or electric heaters.
- Use caution when servicing batteries. Battery acid can cause burns to skin and eyes. If acid is spilled on skin or eyes, flush acid with fresh water and contact a physician immediately.
- Equipment should be mounted in locations and at heights where unauthorized personnel will not readily subject it to tampering.
- The use of accessory equipment not recommended by manufacturer, may cause an unsafe condition, and will void the unit's warranty.
- Do not use this equipment for other than its intended purpose.
- Servicing of this equipment should be performed by qualified service personnel.

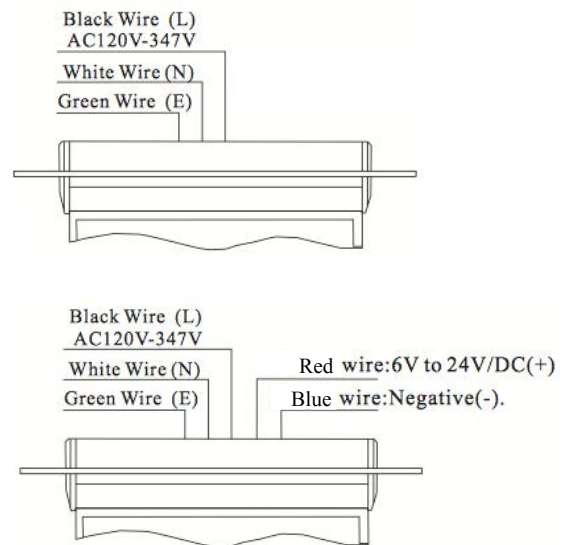
EDGE LIT RUNNING MAN OVERVIEW

This modern swing type edge lit running man sign is constructed with an aluminum housing and acrylic panel that has a unique swing mechanism that allows for a 180 degree rotation. A canopy kit is included for standard surface mounting.

Circuitry

Input Voltage	ES2-RC1SC30B-3
AC 120V 50/60Hz	Input Wattage: 2W
	Input Current: 0.01A
	Efficiency: 0.96P
AC277V 50/60Hz	Input Wattage: 2.5W
	Input Current: 0.01A
	Efficiency: 0.92P
AC347V 50/60Hz	Input Wattage: 3W
	Input Current: 0.01A
	Efficiency: 0.91P
UDC (6V-24V)	1.2W

Wiring Diagram

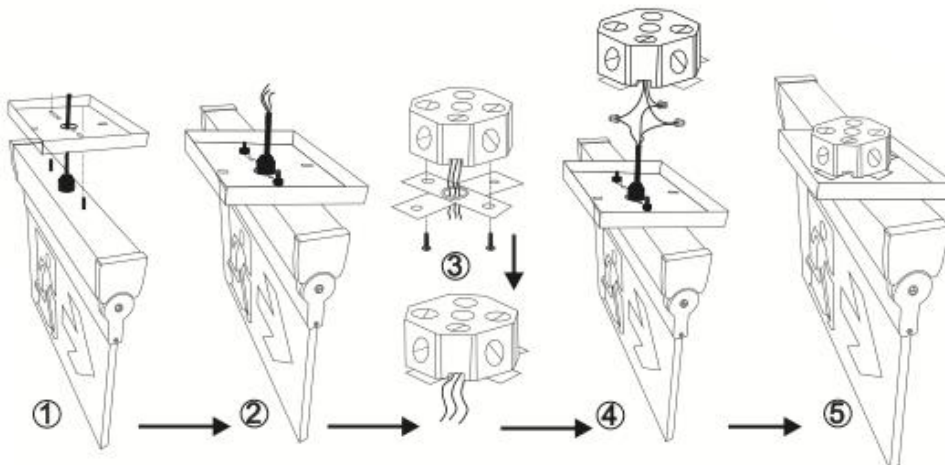
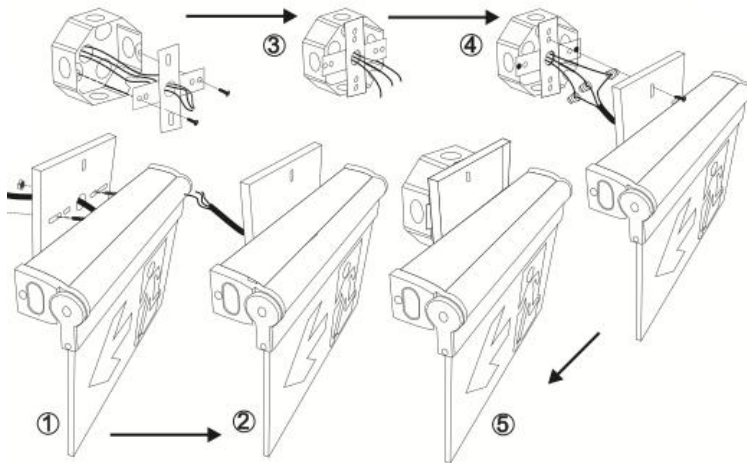


TO CEILING OR WALL MOUNT THE RUNNING MAN

1. Attach spider plate/crossbar to junction box, use screws if needed.
2. Feed AC supply wires through canopy center hole
3. Assemble canopy onto aluminum housing with screws (supplied) and make proper wire connections
4. Black Wire (L); White Wire (N); Green Wire (G/E)
5. Yellow wire:6V to 24V/DC positive(+); Purple wire: Negative(-).
6. Use screws (supplied) to tighten canopy to mounting plate (spider plate/cross bar)
7. The unit can be installed on any surface, you may rotate the Acrylic panel in any angle from 0 degree to 180 degree.

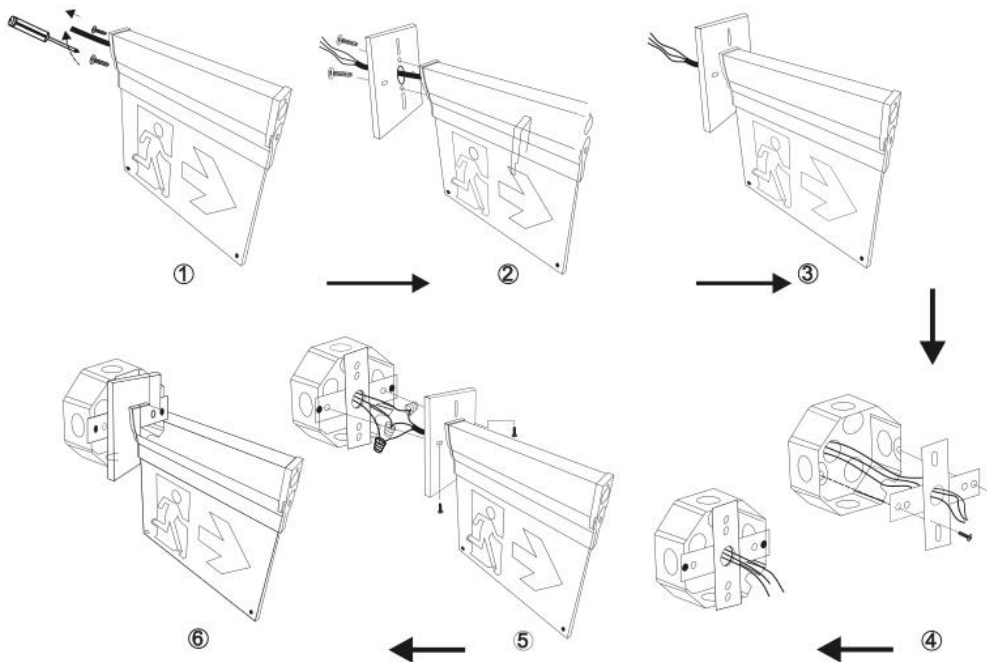
TO CEILING OR WALL MOUNT THE RUNNING MAN

1. Attach spider plate/crossbar to junction box, use screws if needed.
2. Feed AC supply wires through canopy center hole.
3. Attach the canopy onto aluminum housing with screws (supplied) and make proper wire connections
4. Black Wire (L); White Wire (N); Green Wire (G/E)
5. Yellow wire:6V to 24V/DC positive(+); Purple wire: Negative(-).
6. Use screws (supplied) to tighten canopy to mounting plate (spider plate/cross bar).
7. The unit can be installed on any surface, you may rotate the panel in any angle from 0 to 180 degrees.

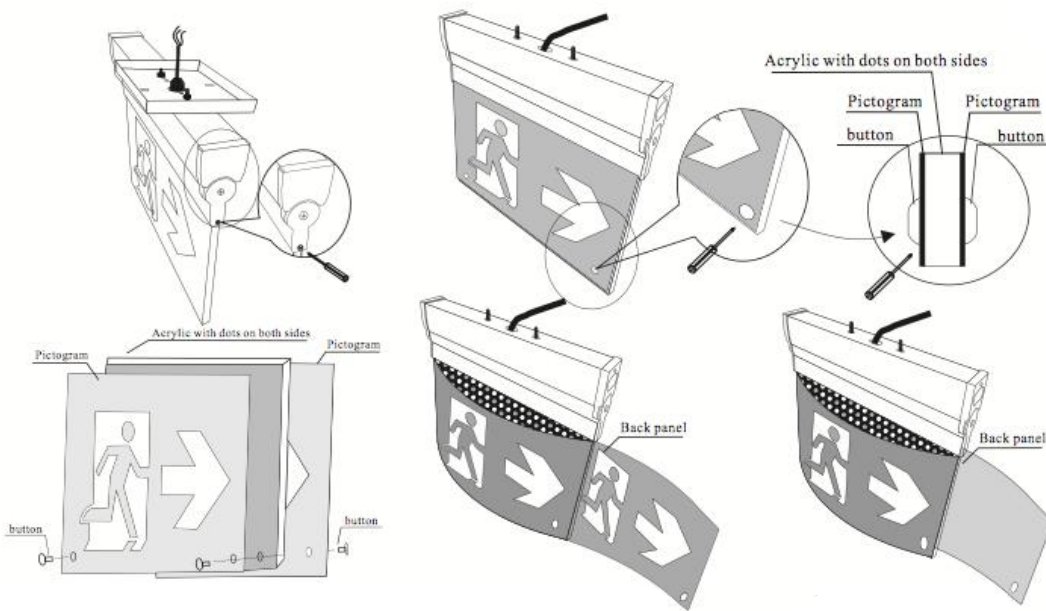


TO FLAG MOUNT THE RUNNING MAN

1. Attach spider plate/crossbar to junction box, use screws if needed.
2. Remove the opposite mounting end cap and knock out the holes on the cap for pulling through wires and assembly screws.
3. Pull out all AC supply wires and feed wires through the holes of end cap (first) and then the canopy.
4. Attach canopy and end cap to metal bracket with screws (supplied) and make proper wire connections.
5. Using screws (supplied) tighten canopy to spider plate (crossbar).
6. The unit can be installed on any surface, you may rotate the panel in any angle from 0 to 180 degrees.



TO CHANGE THE PICTOGRAM



TO TEST THIS UNIT

1. To Test, depress the TEST Switch. The AC indicator will go out and the LEDs will switch to battery power.
2. Release the TEST Switch. The LEDs will switch back to AC power and the AC indicator will come on.

TO MAINTAIN THIS UNIT

Most Codes require that the equipment be tested every 30 days for 30 seconds, and that written records be maintained for all test results and repairs. Further, the equipment is to be tested once a year for the required duration as per Code. The battery is to be replaced or the equipment repaired whenever the equipment fails to operate as intended during the duration test. The manufacturer strongly recommends compliance with all Code requirements.