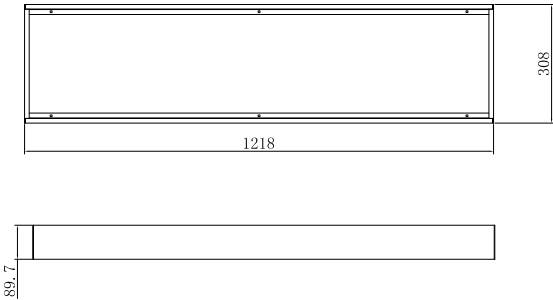
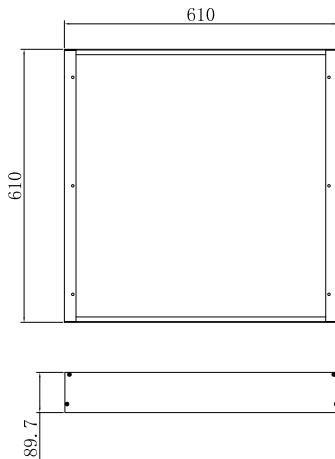
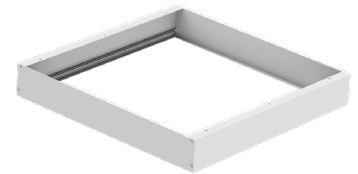


Project	
Date	
Prepared by	
Model #	

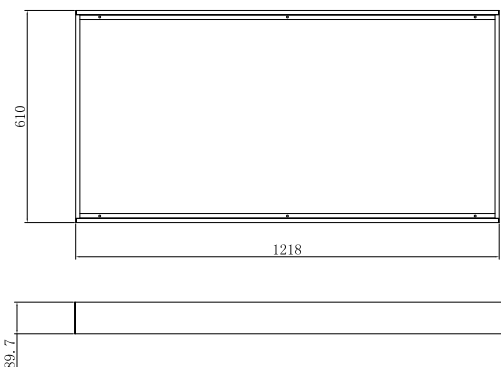
FPH-SERIES SURFACE MOUNT KIT



PRODUCT INFORMATION	
Model #	FPH-14SMK1
Description	Surface Mount Kit for 1x4 Flat Panels
Material	Aluminum
Compatibility	FPH2-Series Hybrid Flat Panels FPH1-Series Hybrid Flat Panels FP6-Series Flat Panels
Dimensions	49.95" x 12.13" with 3.53" profile 1218mm x 308mm with 89.7mm profile



PRODUCT INFORMATION	
Model #	FPH-22SMK1
Description	Surface Mount Kit for 2x2 Flat Panels
Material	Aluminum
Compatibility	FPH2-Series Hybrid Flat Panels FPH1-Series Hybrid Flat Panels FP6-Series Flat Panels
Dimensions	24.02" x 24.02" with 3.53" profile 610mm x 610mm with 89.7mm profile



PRODUCT INFORMATION	
Model #	FPH-24SMK1
Description	Surface Mount Kit for 2x4 Flat Panels
Material	Aluminum
Compatibility	FPH2-Series Hybrid Flat Panels FPH1-Series Hybrid Flat Panels FP6-Series Flat Panels
Dimensions	47.95" x 24.02" with 3.53" profile 1218mm x 610mm with 89.7mm profile