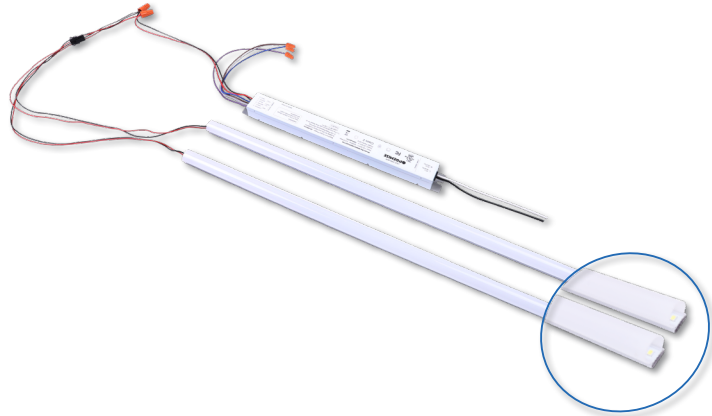




# RK1 SERIES LED LINEAR RETROFIT KIT

### INSTRUCTIONS FOR

- RK1-22254-3      RK1-22255-3
- RK1-24324-3      RK1-24325-3
- RK1-24464-3      RK1-24465-3



### WHAT'S IN THE KIT

- 2 x LED Linear Strips with frosted lenses
- LED driver
- 2 x push-in connectors
- 2 x self tapping screws to securely mount driver (optional use)



### WHAT YOU'LL NEED

- Wiring supplies as per national and local electrical codes
- Optional: #2 Phillips screwdriver for self tapping screws

### IMPORTANT

Before installing fixture, read all instructions and retain for future reference. The important instructions and safeguards that appear in this document are not inclusive of all possible conditions and situations that may occur. It must be understood that common sense, caution, and care are factors that cannot be built into a product. These factors must be supplied by those that care and operate the fixture.

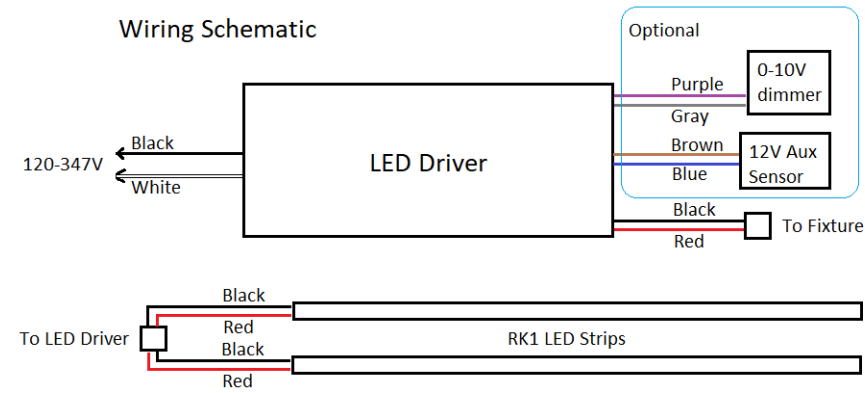
For additional information required not covered in this document please contact a local representative.



### WARNING AND SAFETY

- Risk of electric shock!
- Ensure power is OFF at the electrical panel before starting installation or maintenance
- Verify site supply voltage matches luminaire product label
- Modifications to the product will void warranty
- Ambient temperature range under normal operation not to exceed -25°C to 40°C (-13°F to 104°F)
- Wiring to fixture must be in accordance with the National Electrical Code and all applicable local electrical and safety regulations

## WIRING SCHEMATIC



## INSTALLATION STEPS



1 Remove fixture cover, and existing tubes.



2 Remove and retain ballast cover.



3 Remove all interfering components as required.



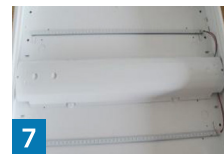
4 Refer to wiring diagram for connections.



5 Connect driver output leads to fixture with supplied quick connect.



6 Place magnetic backed LED Linear Retrofit strips and driver onto fixture.



7 Replace ballast cover, ensuring to cover LED driver.



8 Close fixture cover.

**OPTIONAL**  
To affix driver further, secure with included self tapping screws.

## INSTALLING END CAPS (RK1-CAPS)

Optional accessory kit, purchased separately. (1 kit of 4 caps required per RK1)

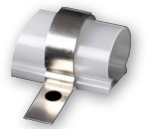
Install prior to mounting into fixture.  
Snap fit caps to the ends of the LED Linear Retrofit strips.



## INSTALLING MOUNTING CLIPS (RK1-CLIPS)

Optional accessory kit, purchased separately. (1 kit of 4 clips and 4 screws required per RK1)

Install clips after mounting into fixture.  
Snap fit clips around the lens of LED Linear Retrofit strips.  
Secure with self tapping screws.



### NOTE

Installed clips will block a small strip of light. Mount according to preference.