

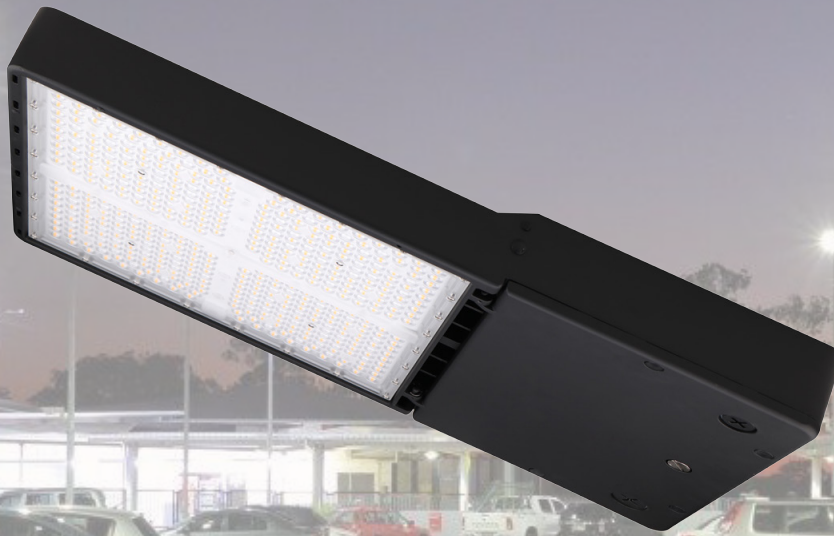


Type II, III, IV or V IES Distribution

Field-Selectable Power Available

120-277V, 120-347V or 277-480V

3000K, 4000K or 5000K



## FL5-Series Area/Flood Lights



The FL5-Series Area Light is our specification grade exterior lighting collection designed for area and site lighting. Finished in black, its sleek design and larger housing size provides an attractive look, providing a modern feel that's perfect for downtown areas, hospital grounds, college campuses, shopping malls, and business complexes.

Offered in various IES Distribution Types and with optional integrated controls, they are a high efficacy solution that allows you to achieve any area lighting requirement.

### Key Features & Benefits

- Choice of IES Distribution Type II, Type III, Type IV or Type V beam patterns
- Multiple mounting options: yoke, trunnion, slipfitter, fixed mount or mounting arm (sold separately)
- Power Selectable models available in 3000K or 5000K
- Operates in -40°F/-40°C degree outdoor weather
- IP65 and Wet Location rated
- Black contemporary finish to complement all outdoor environments
- Built-in socket: ready for field-installable PIR or microwave sensors
- Photocell available (120V only, sold separately)

\*Fixture does not include a mounting arm. Mounting arm must be added upon ordering.

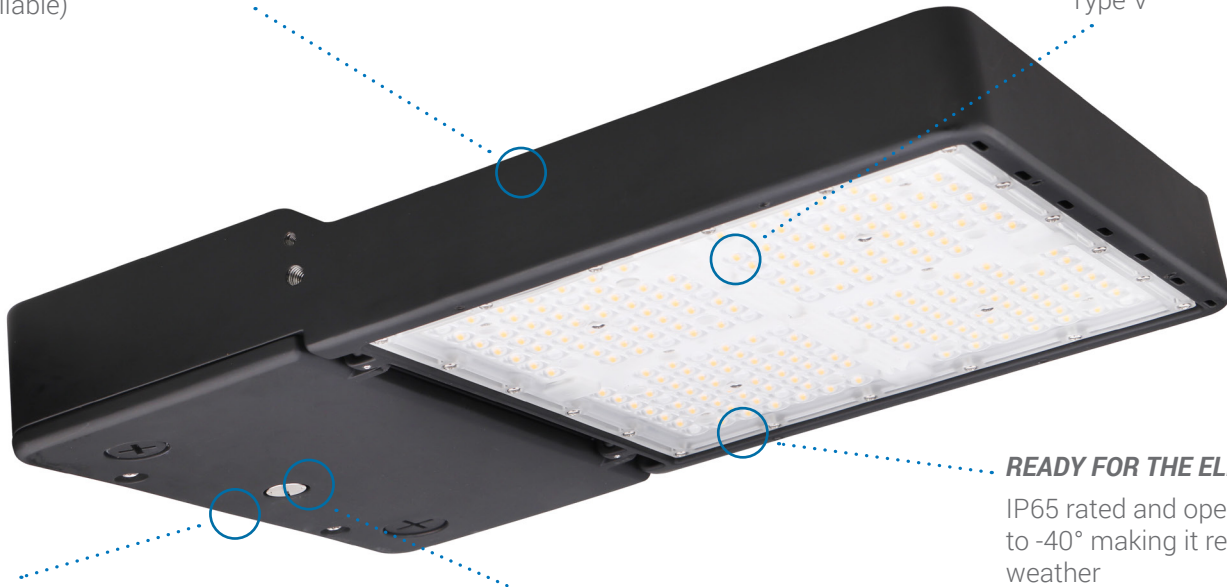
# WHY CHOOSE THIS FIXTURE?

## FIELD-SELECTABLE POWER

Easily adjust the wattage to ensure the light output matches the requirement of your environment (150/100/80W, 300/240/200W, and 450/400/350W selectable models available)

## IES DISTRIBUTION TYPE OPTIONS

Choose between three IES Distribution Types:  
Type II  
Type III  
Type IV  
Type V



## INTERCHANGEABLE MOUNTS

Select from an assortment of mounting options to suit your application

## SENSOR-READY

Optional plug & play microwave, PIR, and photocell sensors available

## READY FOR THE ELEMENTS

IP65 rated and operates down to -40° making it ready for any weather

## ADD YOUR MOUNTING OPTION\*



FIXED ARM



YOKE



TRUNNION



SLIP FITTER



MOUNTING ARM

## AVAILABLE SENSORS



MOTION SENSOR



PIR SENSOR



PHOTOCELL

## AVAILABLE SHIELDS



GLARE SHIELD



SIDE SHIELD

\*All mounts are sold separately.

80-86 CARRIER DRIVE  
TORONTO, ON CANADA M9W 5R1

3401 ENTERPRISE PARKWAY  
BEACHWOOD, OH USA 44122

1-844-741-2673  
EIKOPREMISE.COM

## Available Models (120-277VAC)

MODEL#	VOLTAGE	WATTAGE	LUMEN	CRI	BEAM ANGLE	CCT	DIMMABLE
FL5-0804T2-1	120-277VAC	80W	10,800 lm	80+	IES TYPE II	4000K	0-10V
FL5-0804T3-1	120-277VAC	80W	10,800 lm	80+	IES TYPE III		
FL5-0804T4-1	120-277VAC	80W	10,800 lm	80+	IES TYPE IV		
FL5-0804T5-1	120-277VAC	80W	10,800 lm	80+	IES TYPE V		
FL5-1004T2-1	120-277VAC	100W	13,500 lm	80+	IES TYPE II		
FL5-1004T3-1	120-277VAC	100W	13,500 lm	80+	IES TYPE III		
FL5-1004T4-1	120-277VAC	100W	13,500 lm	80+	IES TYPE IV		
FL5-1004T5-1	120-277VAC	100W	13,500 lm	80+	IES TYPE V		
FL5-1504T2-1	120-277VAC	150W	20,250 lm	80+	IES TYPE II		
FL5-1504T3-1	120-277VAC	150W	20,250 lm	80+	IES TYPE III		
FL5-1504T4-1	120-277VAC	150W	20,250 lm	80+	IES TYPE IV		
FL5-1504T5-1	120-277VAC	150W	20,250 lm	80+	IES TYPE V		
FL5-2004T2-1	120-277VAC	200W	27,000 lm	80+	IES TYPE II		
FL5-2004T3-1	120-277VAC	200W	27,000 lm	80+	IES TYPE III		
FL5-2004T4-1	120-277VAC	200W	27,000 lm	80+	IES TYPE IV		
FL5-2004T5-1	120-277VAC	200W	27,000 lm	80+	IES TYPE V		
FL5-2404T2-1	120-277VAC	240W	32,400 lm	80+	IES TYPE II		
FL5-2404T3-1	120-277VAC	240W	32,400 lm	80+	IES TYPE III		
FL5-2404T4-1	120-277VAC	240W	32,400 lm	80+	IES TYPE IV		
FL5-2404T5-1	120-277VAC	240W	32,400 lm	80+	IES TYPE V		
FL5-3004T2-1	120-277VAC	300W	40,500 lm	80+	IES TYPE II		
FL5-3004T3-1	120-277VAC	300W	40,500 lm	80+	IES TYPE III		
FL5-3004T4-1	120-277VAC	300W	40,500 lm	80+	IES TYPE IV		
FL5-3004T5-1	120-277VAC	300W	40,500 lm	80+	IES TYPE V		
FL5-4504T2-1	120-277VAC	450W	60,750 lm	80+	IES TYPE II		
FL5-4504T3-1	120-277VAC	450W	60,750 lm	80+	IES TYPE III		
FL5-4504T4-1	120-277VAC	450W	60,750 lm	80+	IES TYPE IV		
FL5-4504T5-1	120-277VAC	450W	60,750 lm	80+	IES TYPE V		

## Available Models (277-480VAC)

MODEL#	VOLTAGE	WATTAGE	LUMEN	CRI	BEAM ANGLE	CCT	DIMMABLE
<b>FL5-0804T2-2</b>	277-480VAC	80W	10,800 lm	80+	IES TYPE II	4000K	0-10V
<b>FL5-0804T3-2</b>	277-480VAC	80W	10,800 lm	80+	IES TYPE III		
<b>FL5-0804T4-2</b>	277-480VAC	80W	10,800 lm	80+	IES TYPE IV		
<b>FL5-0804T5-2</b>	277-480VAC	80W	10,800 lm	80+	IES TYPE V		
<b>FL5-1004T2-2</b>	277-480VAC	100W	13,500 lm	80+	IES TYPE II		
<b>FL5-1004T3-2</b>	277-480VAC	100W	13,500 lm	80+	IES TYPE III		
<b>FL5-1004T4-2</b>	277-480VAC	100W	13,500 lm	80+	IES TYPE IV		
<b>FL5-1004T5-2</b>	277-480VAC	100W	13,500 lm	80+	IES TYPE V		
<b>FL5-1504T2-2</b>	277-480VAC	150W	20,250 lm	80+	IES TYPE II		
<b>FL5-1504T3-2</b>	277-480VAC	150W	20,250 lm	80+	IES TYPE III		
<b>FL5-1504T4-2</b>	277-480VAC	150W	20,250 lm	80+	IES TYPE IV		
<b>FL5-1504T5-2</b>	277-480VAC	150W	20,250 lm	80+	IES TYPE V		
<b>FL5-2004T2-2</b>	277-480VAC	200W	27,000 lm	80+	IES TYPE II		
<b>FL5-2004T3-2</b>	277-480VAC	200W	27,000 lm	80+	IES TYPE III		
<b>FL5-2004T4-2</b>	277-480VAC	200W	27,000 lm	80+	IES TYPE IV		
<b>FL5-2004T5-2</b>	277-480VAC	200W	27,000 lm	80+	IES TYPE V		
<b>FL5-2404T2-2</b>	277-480VAC	240W	32,400 lm	80+	IES TYPE II		
<b>FL5-2404T3-2</b>	277-480VAC	240W	32,400 lm	80+	IES TYPE III		
<b>FL5-2404T4-2</b>	277-480VAC	240W	32,400 lm	80+	IES TYPE IV		
<b>FL5-2404T5-2</b>	277-480VAC	240W	32,400 lm	80+	IES TYPE V		
<b>FL5-3004T2-2</b>	277-480VAC	300W	40,500 lm	80+	IES TYPE II		
<b>FL5-3004T3-2</b>	277-480VAC	300W	40,500 lm	80+	IES TYPE III		
<b>FL5-3004T4-2</b>	277-480VAC	300W	40,500 lm	80+	IES TYPE IV		
<b>FL5-3004T5-2</b>	277-480VAC	300W	40,500 lm	80+	IES TYPE V		
<b>FL5-4504T2-2</b>	277-480VAC	450W	60,750 lm	80+	IES TYPE II		
<b>FL5-4504T3-2</b>	277-480VAC	450W	60,750 lm	80+	IES TYPE III		
<b>FL5-4504T4-2</b>	277-480VAC	450W	60,750 lm	80+	IES TYPE IV		
<b>FL5-4504T5-2</b>	277-480VAC	450W	60,750 lm	80+	IES TYPE V		

## Available Models (120-347VAC)

MODEL#	VOLTAGE	WATTAGE	LUMEN	CRI	BEAM ANGLE	CCT	DIMMABLE
<b>FL5-0804T2-3</b>	120-347VAC	80W	10,800 lm	80+	IES TYPE II	4000K	0-10V
<b>FL5-0804T3-3</b>	120-347VAC	80W	10,800 lm	80+	IES TYPE III		
<b>FL5-0804T4-3</b>	120-347VAC	80W	10,800 lm	80+	IES TYPE IV		
<b>FL5-0804T5-3</b>	120-347VAC	80W	10,800 lm	80+	IES TYPE V		
<b>FL5-1004T2-3</b>	120-347VAC	100W	13,500 lm	80+	IES TYPE II		
<b>FL5-1004T3-3</b>	120-347VAC	100W	13,500 lm	80+	IES TYPE III		
<b>FL5-1004T4-3</b>	120-347VAC	100W	13,500 lm	80+	IES TYPE IV		
<b>FL5-1004T5-3</b>	120-347VAC	100W	13,500 lm	80+	IES TYPE V		
<b>FL5-1504T2-3</b>	120-347VAC	150W	20,250 lm	80+	IES TYPE II		
<b>FL5-1504T3-3</b>	120-347VAC	150W	20,250 lm	80+	IES TYPE III		
<b>FL5-1504T4-3</b>	120-347VAC	150W	20,250 lm	80+	IES TYPE IV		
<b>FL5-1504T5-3</b>	120-347VAC	150W	20,250 lm	80+	IES TYPE V		
<b>FL5-2004T2-3</b>	120-347VAC	200W	27,000 lm	80+	IES TYPE II		
<b>FL5-2004T3-3</b>	120-347VAC	200W	27,000 lm	80+	IES TYPE III		
<b>FL5-2004T4-3</b>	120-347VAC	200W	27,000 lm	80+	IES TYPE IV		
<b>FL5-2004T5-3</b>	120-347VAC	200W	27,000 lm	80+	IES TYPE V		
<b>FL5-2404T2-3</b>	120-347VAC	240W	32,400 lm	80+	IES TYPE II		
<b>FL5-2404T3-3</b>	120-347VAC	240W	32,400 lm	80+	IES TYPE III		
<b>FL5-2404T4-3</b>	120-347VAC	240W	32,400 lm	80+	IES TYPE IV		
<b>FL5-2404T5-3</b>	120-347VAC	240W	32,400 lm	80+	IES TYPE V		
<b>FL5-3004T2-3</b>	120-347VAC	300W	40,500 lm	80+	IES TYPE II		
<b>FL5-3004T3-3</b>	120-347VAC	300W	40,500 lm	80+	IES TYPE III		
<b>FL5-3004T4-3</b>	120-347VAC	300W	40,500 lm	80+	IES TYPE IV		
<b>FL5-3004T5-3</b>	120-347VAC	300W	40,500 lm	80+	IES TYPE V		
<b>FL5-4504T2-3</b>	120-347VAC	450W	60,750 lm	80+	IES TYPE II		
<b>FL5-4504T3-3</b>	120-347VAC	450W	60,750 lm	80+	IES TYPE III		
<b>FL5-4504T4-3</b>	120-347VAC	450W	60,750 lm	80+	IES TYPE IV		
<b>FL5-4504T5-3</b>	120-347VAC	450W	60,750 lm	80+	IES TYPE V		

## Available Models (120-277VAC / Selectable Power)

MODEL#	VOLTAGE	WATTAGE	LUMEN	CRI	BEAM ANGLE	CCT	DIMMABLE
FL5-150G3T2-1	120-277VAC	150/100/80W	20,250/13,500/10,800 lm	80+	IES TYPE II	3000K	0-10V
FL5-150G5T2-1	120-277VAC	150/100/80W	20,250/13,500/10,800 lm	80+	IES TYPE II	5000K	
FL5-150G3T3-1	120-277VAC	150/100/80W	20,250/13,500/10,800 lm	80+	IES TYPE III	3000K	
FL5-150G5T3-1	120-277VAC	150/100/80W	20,250/13,500/10,800 lm	80+	IES TYPE III	5000K	
FL5-150G3T4-1	120-277VAC	150/100/80W	20,250/13,500/10,800 lm	80+	IES TYPE IV	3000K	
FL5-150G5T4-1	120-277VAC	150/100/80W	20,250/13,500/10,800 lm	80+	IES TYPE IV	5000K	
FL5-150G3T5-1	120-277VAC	150/100/80W	20,250/13,500/10,800 lm	80+	IES TYPE V	3000K	
FL5-150G5T5-1	120-277VAC	150/100/80W	20,250/13,500/10,800 lm	80+	IES TYPE V	5000K	
FL5-300G3T2-1	120-277VAC	300/240/200W	40,500/32,400/27,000 lm	80+	IES TYPE II	3000K	
FL5-300G5T2-1	120-277VAC	300/240/200W	40,500/32,400/27,000 lm	80+	IES TYPE II	5000K	
FL5-300G3T3-1	120-277VAC	300/240/200W	40,500/32,400/27,000 lm	80+	IES TYPE III	3000K	
FL5-300G5T3-1	120-277VAC	300/240/200W	40,500/32,400/27,000 lm	80+	IES TYPE III	5000K	
FL5-300G3T4-1	120-277VAC	300/240/200W	40,500/32,400/27,000 lm	80+	IES TYPE IV	3000K	
FL5-300G5T4-1	120-277VAC	300/240/200W	40,500/32,400/27,000 lm	80+	IES TYPE IV	5000K	
FL5-300G3T5-1	120-277VAC	300/240/200W	40,500/32,400/27,000 lm	80+	IES TYPE V	3000K	
FL5-300G5T5-1	120-277VAC	300/240/200W	40,500/32,400/27,000 lm	80+	IES TYPE V	5000K	
FL5-450G3T2-1	120-277VAC	450/400/350W	60,750/54,000/47,250 lm	80+	IES TYPE II	3000K	
FL5-450G5T2-1	120-277VAC	450/400/350W	60,750/54,000/47,250 lm	80+	IES TYPE II	5000K	
FL5-450G3T3-1	120-277VAC	450/400/350W	60,750/54,000/47,250 lm	80+	IES TYPE III	3000K	
FL5-450G5T3-1	120-277VAC	450/400/350W	60,750/54,000/47,250 lm	80+	IES TYPE III	5000K	
FL5-450G3T4-1	120-277VAC	450/400/350W	60,750/54,000/47,250 lm	80+	IES TYPE IV	3000K	
FL5-450G5T4-1	120-277VAC	450/400/350W	60,750/54,000/47,250 lm	80+	IES TYPE IV	5000K	
FL5-450G3T5-1	120-277VAC	450/400/350W	60,750/54,000/47,250 lm	80+	IES TYPE V	3000K	
FL5-450G5T5-1	120-277VAC	450/400/350W	60,750/54,000/47,250 lm	80+	IES TYPE V	5000K	

### Available Models (277-480VAC / Selectable Power)

MODEL#	VOLTAGE	WATTAGE	LUMEN	CRI	BEAM ANGLE	CCT	DIMMABLE
<b>FL5-150G3T2-2</b>	277-480VAC	150/100/80W	20,250/13,500/10,800 lm	80+	IES TYPE II	3000K	0-10V
<b>FL5-150G5T2-2</b>	277-480VAC	150/100/80W	20,250/13,500/10,800 lm	80+	IES TYPE II	5000K	
<b>FL5-150G3T3-2</b>	277-480VAC	150/100/80W	20,250/13,500/10,800 lm	80+	IES TYPE III	3000K	
<b>FL5-150G5T3-2</b>	277-480VAC	150/100/80W	20,250/13,500/10,800 lm	80+	IES TYPE III	5000K	
<b>FL5-150G3T4-2</b>	277-480VAC	150/100/80W	20,250/13,500/10,800 lm	80+	IES TYPE IV	3000K	
<b>FL5-150G5T4-2</b>	277-480VAC	150/100/80W	20,250/13,500/10,800 lm	80+	IES TYPE IV	5000K	
<b>FL5-150G3T5-2</b>	277-480VAC	150/100/80W	20,250/13,500/10,800 lm	80+	IES TYPE V	3000K	
<b>FL5-150G5T5-2</b>	277-480VAC	150/100/80W	20,250/13,500/10,800 lm	80+	IES TYPE V	5000K	
<b>FL5-300G3T2-2</b>	277-480VAC	300/240/200W	40,500/32,400/27,000 lm	80+	IES TYPE II	3000K	
<b>FL5-300G5T2-2</b>	277-480VAC	300/240/200W	40,500/32,400/27,000 lm	80+	IES TYPE II	5000K	
<b>FL5-300G3T3-2</b>	277-480VAC	300/240/200W	40,500/32,400/27,000 lm	80+	IES TYPE III	3000K	
<b>FL5-300G5T3-2</b>	277-480VAC	300/240/200W	40,500/32,400/27,000 lm	80+	IES TYPE III	5000K	
<b>FL5-300G3T4-2</b>	277-480VAC	300/240/200W	40,500/32,400/27,000 lm	80+	IES TYPE IV	3000K	
<b>FL5-300G5T4-2</b>	277-480VAC	300/240/200W	40,500/32,400/27,000 lm	80+	IES TYPE IV	5000K	
<b>FL5-300G3T5-2</b>	277-480VAC	300/240/200W	40,500/32,400/27,000 lm	80+	IES TYPE V	3000K	
<b>FL5-300G5T5-2</b>	277-480VAC	300/240/200W	40,500/32,400/27,000 lm	80+	IES TYPE V	5000K	
<b>FL5-450G3T2-2</b>	277-480VAC	450/400/350W	60,750/54,000/47,250 lm	80+	IES TYPE II	3000K	
<b>FL5-450G5T2-2</b>	277-480VAC	450/400/350W	60,750/54,000/47,250 lm	80+	IES TYPE II	5000K	
<b>FL5-450G3T3-2</b>	277-480VAC	450/400/350W	60,750/54,000/47,250 lm	80+	IES TYPE III	3000K	
<b>FL5-450G5T3-2</b>	277-480VAC	450/400/350W	60,750/54,000/47,250 lm	80+	IES TYPE III	5000K	
<b>FL5-450G3T4-2</b>	277-480VAC	450/400/350W	60,750/54,000/47,250 lm	80+	IES TYPE IV	3000K	
<b>FL5-450G5T4-2</b>	277-480VAC	450/400/350W	60,750/54,000/47,250 lm	80+	IES TYPE IV	5000K	
<b>FL5-450G3T5-2</b>	277-480VAC	450/400/350W	60,750/54,000/47,250 lm	80+	IES TYPE V	3000K	
<b>FL5-450G5T5-2</b>	277-480VAC	450/400/350W	60,750/54,000/47,250 lm	80+	IES TYPE V	5000K	

### Available Models (120-347VAC / Selectable Power)

MODEL#	VOLTAGE	WATTAGE	LUMEN	CRI	BEAM ANGLE	CCT	DIMMABLE
<b>FL5-150G3T2-3</b>	120-347VAC	150/100/80W	20,250/13,500/10,800 lm	80+	IES TYPE II	3000K	0-10V
<b>FL5-150G5T2-3</b>	120-347VAC	150/100/80W	20,250/13,500/10,800 lm	80+	IES TYPE II	5000K	
<b>FL5-150G3T3-3</b>	120-347VAC	150/100/80W	20,250/13,500/10,800 lm	80+	IES TYPE III	3000K	
<b>FL5-150G5T3-3</b>	120-347VAC	150/100/80W	20,250/13,500/10,800 lm	80+	IES TYPE III	5000K	
<b>FL5-150G3T4-3</b>	120-347VAC	150/100/80W	20,250/13,500/10,800 lm	80+	IES TYPE IV	3000K	
<b>FL5-150G5T4-3</b>	120-347VAC	150/100/80W	20,250/13,500/10,800 lm	80+	IES TYPE IV	5000K	
<b>FL5-150G3T5-3</b>	120-347VAC	150/100/80W	20,250/13,500/10,800 lm	80+	IES TYPE V	3000K	
<b>FL5-150G5T5-3</b>	120-347VAC	150/100/80W	20,250/13,500/10,800 lm	80+	IES TYPE V	5000K	
<b>FL5-300G3T2-3</b>	120-347VAC	300/240/200W	40,500/32,400/27,000 lm	80+	IES TYPE II	3000K	
<b>FL5-300G5T2-3</b>	120-347VAC	300/240/200W	40,500/32,400/27,000 lm	80+	IES TYPE II	5000K	
<b>FL5-300G3T3-3</b>	120-347VAC	300/240/200W	40,500/32,400/27,000 lm	80+	IES TYPE III	3000K	
<b>FL5-300G5T3-3</b>	120-347VAC	300/240/200W	40,500/32,400/27,000 lm	80+	IES TYPE III	5000K	
<b>FL5-300G3T4-3</b>	120-347VAC	300/240/200W	40,500/32,400/27,000 lm	80+	IES TYPE IV	3000K	
<b>FL5-300G5T4-3</b>	120-347VAC	300/240/200W	40,500/32,400/27,000 lm	80+	IES TYPE IV	5000K	
<b>FL5-300G3T5-3</b>	120-347VAC	300/240/200W	40,500/32,400/27,000 lm	80+	IES TYPE V	3000K	
<b>FL5-300G5T5-3</b>	120-347VAC	300/240/200W	40,500/32,400/27,000 lm	80+	IES TYPE V	5000K	
<b>FL5-450G3T2-3</b>	120-347VAC	450/400/350W	60,750/54,000/47,250 lm	80+	IES TYPE II	3000K	
<b>FL5-450G5T2-3</b>	120-347VAC	450/400/350W	60,750/54,000/47,250 lm	80+	IES TYPE II	5000K	
<b>FL5-450G3T3-3</b>	120-347VAC	450/400/350W	60,750/54,000/47,250 lm	80+	IES TYPE III	3000K	
<b>FL5-450G5T3-3</b>	120-347VAC	450/400/350W	60,750/54,000/47,250 lm	80+	IES TYPE III	5000K	
<b>FL5-450G3T4-3</b>	120-347VAC	450/400/350W	60,750/54,000/47,250 lm	80+	IES TYPE IV	3000K	
<b>FL5-450G5T4-3</b>	120-347VAC	450/400/350W	60,750/54,000/47,250 lm	80+	IES TYPE IV	5000K	
<b>FL5-450G3T5-3</b>	120-347VAC	450/400/350W	60,750/54,000/47,250 lm	80+	IES TYPE V	3000K	
<b>FL5-450G5T5-3</b>	120-347VAC	450/400/350W	60,750/54,000/47,250 lm	80+	IES TYPE V	5000K	



## Mounting Accessories

<b>FL5-TR</b>	Trunnion mount for FL5 80-300W
<b>FL5-TR-XL</b>	Trunnion mount for FL5 450W
<b>FL5-MA</b>	Mounting arm for FL5, 80-300W
<b>FL5-MA-XL</b>	Mounting arm for FL5 450W
<b>FL5-SF</b>	Slip fitter for FL5, 80-300W
<b>FL5-SF-XL</b>	Slip fitter for FL5 450W
<b>FL5-FM</b>	Fixed mount for FL5, 80-300W
<b>FL5-FM-XL</b>	Fixed mount for FL5, 450W
<b>FL5-YK-S</b>	Yoke for 80W & 100W FL5 models
<b>FL5-YK-L</b>	Yoke for 240W & 300W FL5 models
<b>FL5-YK-XL</b>	Yoke for 450W FL5 models

## Glare Shield Accessories

<b>FL5-SHIELD-S</b>	Glare shield for FL5, 80W & 100W, front or back
<b>FL5-SHIELD-M</b>	Glare shield for FL5, 150W & 200W, front or back
<b>FL5-SHIELD-L</b>	Glare shield for FL5, 240W & 300W, front or back
<b>FL5-SHIELD-XL</b>	Glare shield for FL5, 450W, front or back
<b>FL5-SHIELD-SIDE-S</b>	Side shield for FL5, 80W & 100W, either side
<b>FL5-SHIELD-SIDE-M</b>	Side shield for FL5, 150W & 200W, either side
<b>FL5-SHIELD-SIDE-L</b>	Side shield for FL5, 240W & 300W, either side
<b>FL5-SHIELD-SIDE-XL</b>	Side shield for FL5, 450W, either side

## Motion Sensors

<b>FL5-MS</b>	Microwave sensor, fixture only mount for FL5, 12V
<b>FL5-MSP</b>	PIR sensor, fixture only mount for FL5, 12V

## Photocells

<b>JL-205C</b>	3-pin twist-lock photocell, 120-277V, 120W+ only
<b>JL-207C</b>	3-pin twist-lock photocell, 120-277V, any wattage
<b>JL-207F</b>	3-pin twist-lock photocell, 120-480V, any wattage
<b>JL-242C</b>	5-pin twist-lock photocell, midnight dimming, 120-277V
<b>JL-242F</b>	5-pin twist-lock photocell, midnight dimming, 347-480V