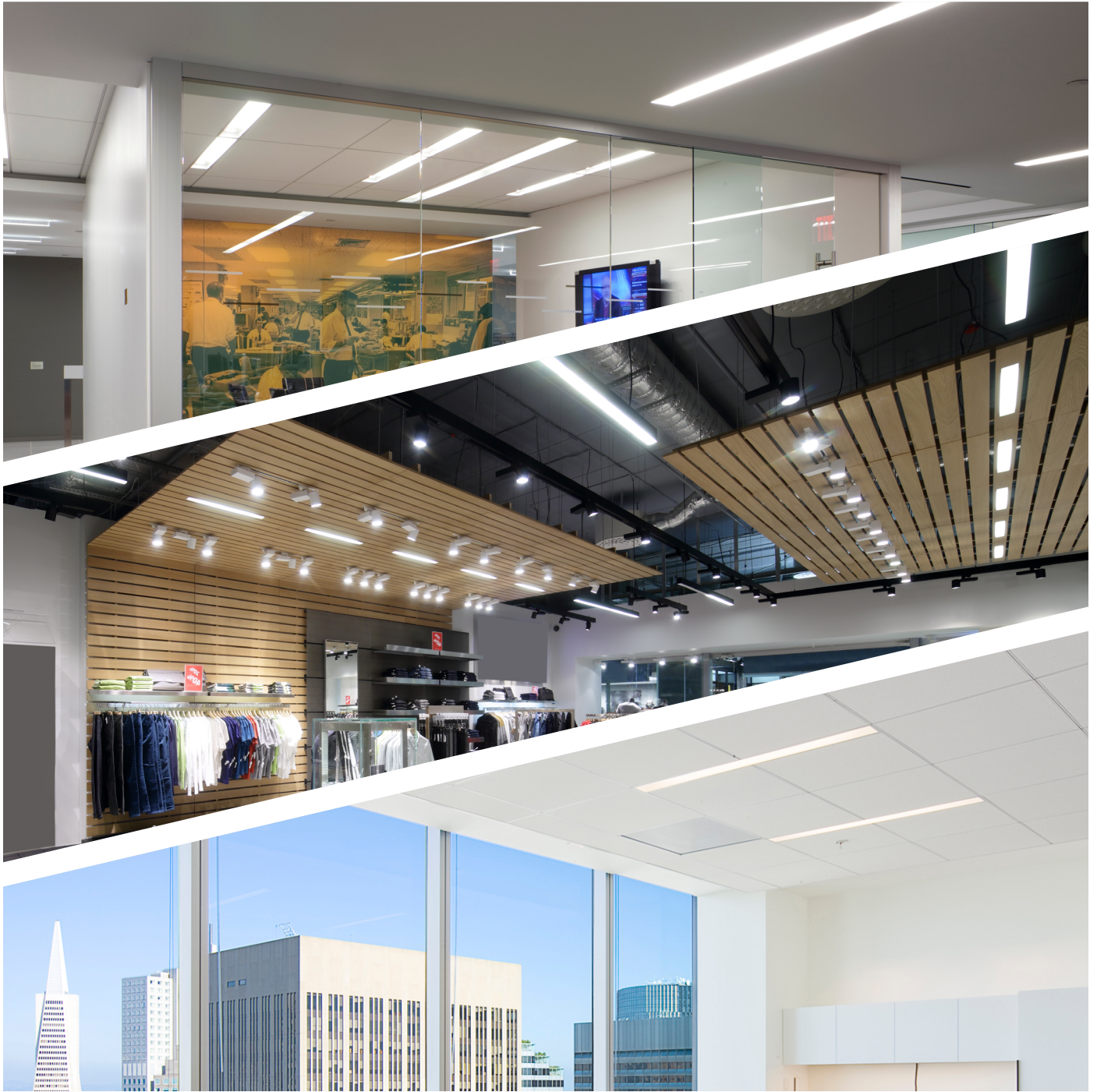


T8/T5 LED LINEAR

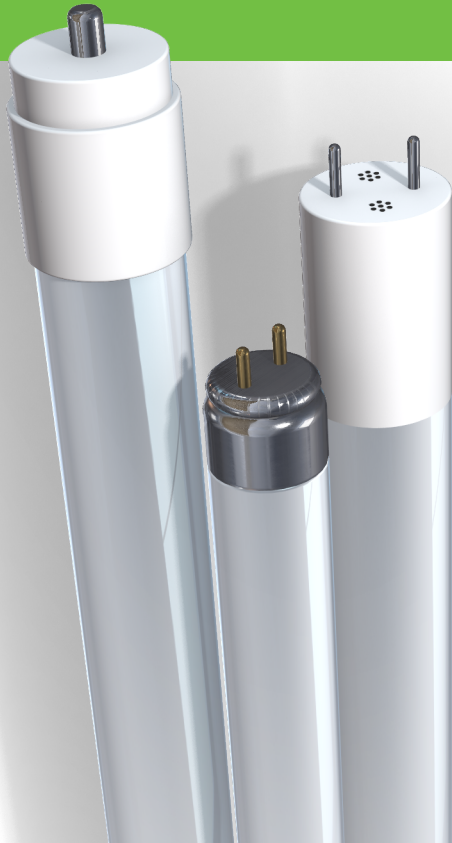


CONNECTED SOLUTIONS. SERVICE. SIMPLICITY.



EIKO.COM

THE LINE ON LINEAR.



Retrofit your linear fluorescent tubes with Eiko LED tubes and save time and money. Eiko LED linear tubes last 2x longer and use up to 80% less energy.

Upgrading your light source from traditional to LED is made easier by Eiko. LEDs provide lower energy bills and reduced maintenance costs – with additional savings via utility rebates from your energy provider.

Eiko carries a full line of LED linear tubes for any application, including direct fit, line voltage/ballast bypass, Type C with external driver, hybrid dual mode, and double ended models, in T5, T8, and U-bend.

Find out more at EiKO.COM!

	DOUBLE-ENDED TYPE B (Double-ended line voltage input)	LINE VOLTAGE TYPE B (Single-Ended Input)	TYPE C	DUAL MODE TYPE A+B	DIRECT FIT TYPE A
FEATURES:	Simple, easy connection to line voltage; works with either shunted or non-shunted tombstone holders	Ballast bypass, must connect directly to line voltage	Operates on external driver (sold separately)	Plug-and-play; operates on ballast or line voltage	Plug-and-play; uses existing ballast - no rewiring or modifications required
REQUIRED MODIFICATIONS:	Non-shunted lamp holders must be shunted with an external jumper. Both pins on each end must be connected to line voltage.	Disconnect ballast; connect line voltage to non-shunted socket	Replace existing fluorescent ballast with compatible external LED driver	For line voltage operation, disconnect ballast and connect line voltage	None
LIFETIME COST:	Best long-term solution. Lowest lifetime cost; simple modifications up-front	Fixture rewiring required before installation	Simple modifications up-front, but allows for improved performance and dimming capabilities	Must rewire fixture when ballast fails	Lowest up-front cost; ballast must be replaced upon original ballast failure

BEST LONG-TERM SOLUTION

LOWEST UP-FRONT COST



APPLICATIONS



COMMERCIAL



EDUCATION



RETAIL



HOSPITALITY

DLC QUALIFIED



Many of EIKO's LED linear products are DesignLights Consortium® Qualified for high performance and energy efficiency. Products that earn the DLC qualification are often eligible for rebates through various energy efficiency programs.



NSF / ETL SANITATION LISTED



Intertek

All EIKO tubes are either NSF/ANSI Certified or ETL Sanitation Listed to meet industry standards for construction, safety, and performance in areas where sanitation is of the utmost importance.

LED LINEAR PRODUCT LINES



T8 LED DOUBLE-ENDED

Easy-to-install double-end powered line voltage/ballast bypass tubes

- Use with shunted or non-shunted tombstone holders
- Suitable for use in totally enclosed fixtures
- Line voltage; no external ballast/driver required
- 9W-17W; 2'3/4' and 8' (single-ended) length
- Sign Tube options also available



T8 LED LINE VOLTAGE

No external ballast or driver required; operates on universal 120-277V line voltage

- Single-end powered, solid state replacements for linear fluorescent tubes
- Suitable for use in totally enclosed fixtures
- Existing fixture maintains original UL compliance per UL1598C listing
- 9W-43W; 2'3/4' length



T8 LED DUAL MODE

Hybrid Dual Mode for use with programmed/instant start ballasts OR direct line voltage

- Directly replaces linear fluorescent tubes
- Use with shunted tombstone holders when used as a direct fit lamp with ballast
- Suitable for use in totally enclosed fixtures
- Compatible with select emergency battery backup



T8 LED DIRECT FIT

“Plug and Play” solutions that work with existing electronic T8 ballasts

- Easy to install; no rewiring or modifications of any kind required
- Suitable for use in totally enclosed fixtures
- No socket changes; uses shunted or non-shunted sockets
- 8W-22W; 2'3/4' length



T5 LED LINE VOLTAGE

No external ballast or driver required; operates on universal 120-277V line voltage

- Double-end powered
- Existing fixture maintains original UL compliance per UL1598C listing
- Suitable for use in totally enclosed fixtures
- 25W; 4' length
- Integral 120-277V drivers for easy installation



T5 LED DIRECT FIT

“Plug and Play” solutions that work with existing electronic T5 ballasts

- Easy to install; no rewiring or modifications
- No socket changes; for use with non-shunted socketed fixtures
- Operates on most popular electronic programmed-start fluorescent T5 ballasts
- 11W-25W; 2'4' length



T8 & T5 TYPE C

Operated by an external driver for optimal system efficacy and performance

- External Driver directly replaces fluorescent ballast
- PET coated to protect against shattering
- 0-10V Dimming
- 3500K, 4000K, 5000K
- Fixture retains original UL compliance

