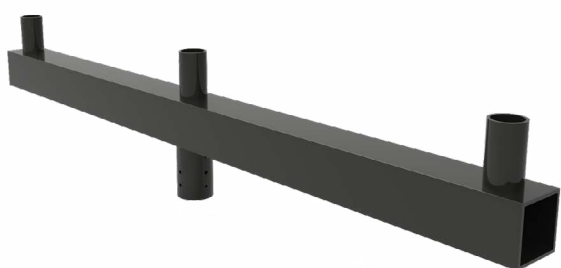




**LIGHT POLE ADAPTERS
AND BRACKETS
LOW PROFILE BULLHORN,
THREE TENONS WITH END
CAPS**



Project	
Date	
Prepared by	
Model #	PA-3BH-BK

OVERVIEW

This low profile square bullhorn bracket converts a single tenon to three in line. Slip fit over a 2 3/8" tenon, three 2 3/8" vertical tenons on top for three fixtures. This bracket is available in a standard matte black finish, custom paint options are also available.

PRODUCT HIGHLIGHTS

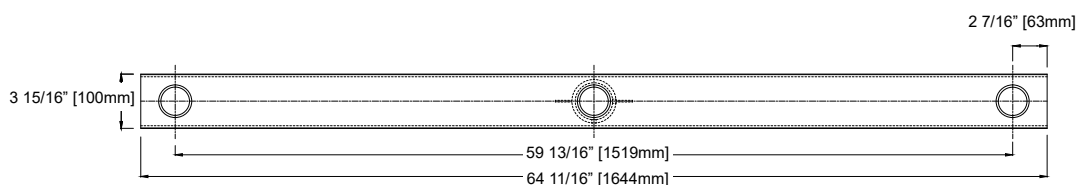
- 3 x 2 3/8" tenons in line
- Slip fit over 2 3/8" tenon
- Powder coated steel
- Custom paint options available

CONSTRUCTION

Housing Material	Powder coated steel	Weight (kg/lbs)	21.0 kg / 46.3 lbs
Housing Color	Matte black	Warranty	1 year
Dimensions (inch/mm)	L: 64 11/16" (1644mm) W: 3 15/16" (100mm) H: 12 5/8" (320mm)	Installation Method	Pole mount, with tenon
		EPA	2.20 ft²
		Maximum Fixture EPA	10.0 ft²

PRODUCT DIMENSIONS

Top View



Side View

