



# HIGH BAY LIGHTING SOLUTIONS

SMART, SIMPLE, SAVINGS

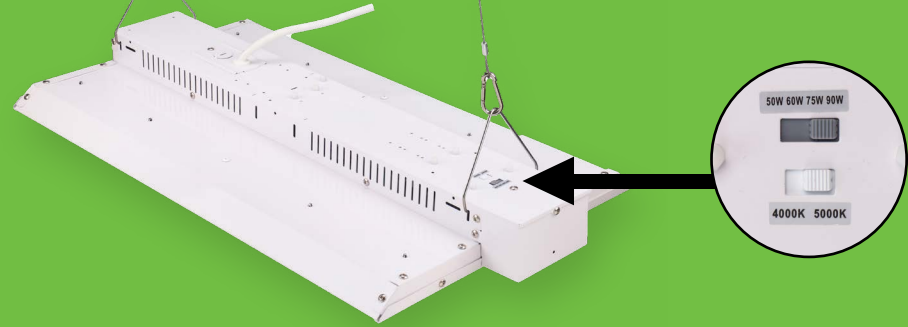
[eiko.com](http://eiko.com)

# LHS1 VERSATILE

Traditional *single lens* design with contemporary *power and color select* technology.



**EASY INSTALL**  
V hooks and 6.5'  
aircraft cable included



**4 POWER SETTINGS**  
**2 COLOR TEMPS**



# LH1 PRO

The smart choice for *reliable, high-performance* lighting with *flexible optical control*.



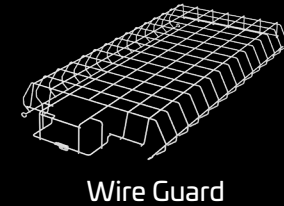
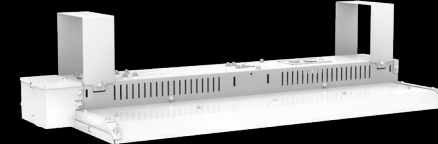
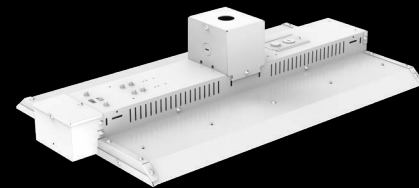
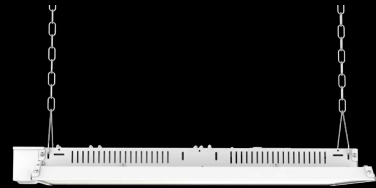
**SWAPPABLE OPTICS**

Snap and slide out the 90° wide lens,  
and replace with 65° aisle lens.

**EASY INSTALL**  
V hooks and 6.5'  
aircraft cable included

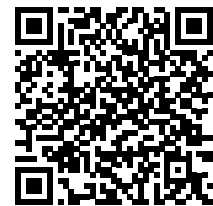


## MOUNTING OPTIONS & ACCESSORIES



## FEATURES AND BENEFITS

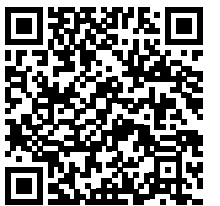
- Wattage range: 50W – 440W
- Color Selectable (Field CCeT): 4000K/5000K
- Input voltage: 120-347V, 277-480V
- Lumen packages: 7,500 – 66,000 lumens
- Surge Protection 6kV included, 10kV/20kV optional
- Emergency Lighting Solutions: 18W or 40W emergency battery pack options (field/factory installed)
- Controls Ready: Standalone or networked (via Silvoir app)



[View spec sheet](#)

## FEATURES AND BENEFITS

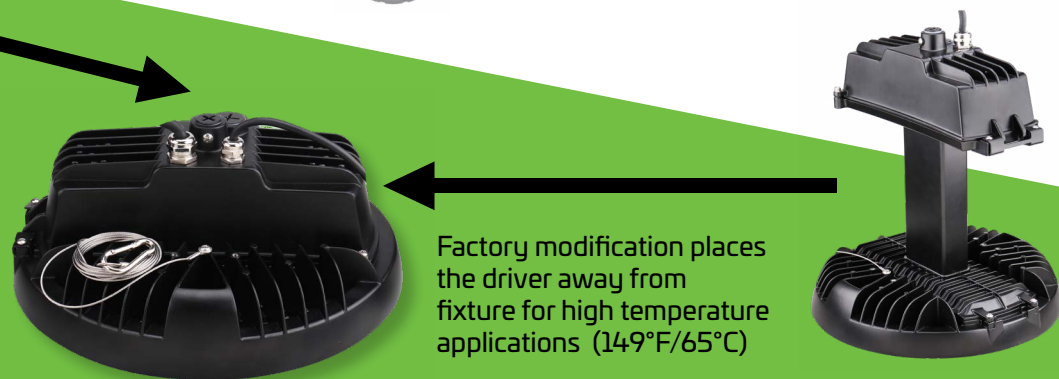
- Wattage range: 90W - 440W
- Color Selectable (Field CCeT): 4000K/5000K
- Input voltage: 120-347V, 120-277V, 277-480V
- Lumen packages: 13,500 - 66,000 lumens
- Surge Protection 6kV included, 10kV/20kV optional
- Emergency Lighting Solutions: 18W or 40W emergency battery pack options (field/factory installed)
- Controls Ready: Standalone or networked (via Silvoir app)



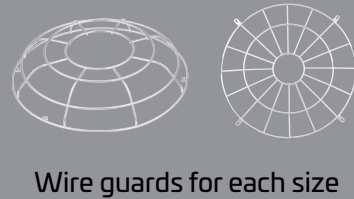
[View spec sheet](#)

# HBX3 PERFORMANCE

Built for the toughest applications involving high power, high voltage, and high temperature.

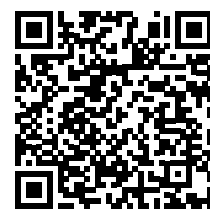


## MOUNTING OPTIONS & ACCESSORIES



## FEATURES AND BENEFITS

- Wattage range: 80W - 300W
- Color Selectable (Field CCeT): 4000K/5000K
- Input voltage: 120-277V, 277-480V
- Lumen packages: 12,800 – 48,000 lumens
- Surge Protection: 10kV included, 10kV/20kV optional
- Emergency Lighting Solutions: 40W emergency battery pack options (field installed)
- Controls Ready: Standalone or networked (via Silvoir app)
- NEMA 4X Rated, NSF Rated option



[View spec sheet](#)

# BAYE3 VALUE

Mainstream, contractor focused, round high bay for mid-power requirements up to 240W and 120-347V input voltage.



3 COLOR TEMPS



## FEATURES AND BENEFITS

- Wattage range: 90W - 440W
- Color Selectable (Field CCeT): 3500K/4000K/5000K
- Input voltage: 120-347V for Canada, 120-277V for US
- Lumen packages: 13,500 – 66,000 lumens
- Surge Protection: 6kV included
- Emergency Lighting Solutions: 40W emergency battery pack options (field installed)
- Controls Ready: Standalone or networked (via Silvoir app)
- Matte black or white finish



[View spec sheet](#)



# LINEAR HIGH BAYS

## LHS1 VERSATILE



ORDER CODE	NAME	VOLTAGE(V)	WATTAGE(W)	LUMENS (LM)
<b>120-347V - POWERSET &amp; FIELD CCeT (4000K/5000K)</b>				
15127	LHS1-PS90-8FCCT-HDIM	120-347	90/75/60/50	13,500/11,250/9,000/7,500
15129	LHS1-PS160-8FCCT-HDIM	120-347	160/130/110/90	24,000/19,500/16,500/13,500
15131	LHS1-PS200-8FCCT-HDIM	120-347	200/180/160/140	30,000/27,000/24,000/21,000
15132	LHS1-PS240-8FCCT-HDIM	120-347	240/220/200/180	36,000/33,000/30,000/27,000
15133	LHS1-PS320-8FCCT-HDIM	120-347	320/300/280/260	48,000/45,000/42,000/39,000
15134	LHS1-PS440-8FCCT-HDIM	120-347	440/400/380/360	66,000/60,000/57,000/54,000
<b>277-480V - POWERSET &amp; FIELD CCeT (4000K/5000K)</b>				
15135	LHS1-PS160-8FCCT-VDIM	277-480	160/130/110/90	24,000/19,500/16,500/13,500
15136	LHS1-PS240-8FCCT-VDIM	277-480	240/220/200/180	36,000/33,000/30,000/27,000
15137	LHS1-PS320-8FCCT-VDIM	277-480	320/300/280/260	48,000/45,000/42,000/39,000
15138	LHS1-PS440-8FCCT-VDIM	277-480	440/400/380/360	66,000/60,000/57,000/54,000

## LH1 PRO



ORDER CODE	NAME	VOLTAGE(V)	WATTAGE(W)	LUMENS (LM)
<b>120-347V POWERSET &amp; FIELD CCeT (4000K/5000K)</b>				
14980	LH1-PS160-FCCT-H	120-347	160/130/110/90	24,000/19,500/16,500/13,500
14981	LH1-PS240-FCCT-H	120-347	240/220/200/180	36,000/33,000/30,000/27,000
15642	LH1-PS320-FCCT-H	120-347	320/300/280/260	48,000/45,000/42,000/39,000
15644	LH1-PS440-FCCT-H	120-347	440/400/380/360	66,000/60,000/57,000/54,000
<b>277-480V POWERSET &amp; FIELD CCeT (4000K/5000K)</b>				
15643	LH1-PS320-FCCT-V	277-480	320/300/280/260	48,000/45,000/42,000/39,000
15645	LH1-PS440-FCCT-V	277-480	440/400/380/360	66,000/60,000/57,000/54,000

## LHC1 COMPACT



ORDER CODE	NAME	VOLTAGE(V)	WATTAGE(W)	LUMENS (LM)
13141	LHC1-PS150-40-U	120-277V	150/130/110/90	21,000/18,200/15,400/12,600
13142	LHC1-PS150-50-U	120-277V	150/130/110/90	21,000/18,200/15,400/12,600



### FEATURES AND BENEFITS

- Wattage range: 90W - 150W
- Input voltage: 120-277V
- Lumen package: 12,600 – 21,000 lumens
- 6kV Surge Protection
- Emergency Lighting Solutions: 40W emergency battery pack option (field installed)
- Controls Ready: Standalone or networked (via Silclair app)

# ROUND HIGH BAYS

## HBX3 PERFORMANCE



ORDER CODE	NAME	VOLTAGE(V)	WATTAGE(W)	LUMENS (LM)
<b>120-277V POWERSET</b>				
13559	HBX3-PS300-40-U	120-277	300/285/270/255	48,000/45,600/43,200/40,800
13560	HBX3-PS300-50-U	120-277	300/285/270/255	48,000/45,600/43,200/40,800
<b>277-480V POWERSET</b>				
13561	HBX3-PS150-40-V	277-480	150/130/100/80	24,000/20,800/16,000/12,800
13562	HBX3-PS150-50-V	277-480	150/130/100/80	24,000/20,800/16,000/12,800
13563	HBX3-PS240-40-V	277-480	240/220/200/180	38,400/35,200/32,000/28,800
13564	HBX3-PS240-50-V	277-480	240/220/200/180	38,400/35,200/32,000/28,800
13565	HBX3-PS300-40-V	277-480	300/285/270/255	48,000/45,600/43,200/40,800
13566	HBX3-PS300-50-V	277-480	300/285/270/255	48,000/45,600/43,200/40,800

## BAYE3 VALUE



ORDER CODE	NAME	VOLTAGE(V)	WATTAGE(W)	LUMENS (LM)
<b>120-277V POWERSET &amp; FIELD CCeT (3500K/4000K/5000K)</b>				
13163	BAYE3-PS150-FCCT-U	120-277	150/130/100	22,500/19,500/15,000
13164	BAYE3-PS150-FCCT-U-WH	120-277	150/130/100	22,500/19,500/15,000
13165	BAYE3-PS240-FCCT-U	120-277	240/200/180	36,000/30,000/27,000
13166	BAYE3-PS240-FCCT-U-WH	120-277	240/200/180	36,000/30,000/27,000
<b>120-347V POWERSET &amp; FIELD CCeT (3500K/4000K/5000K)</b>				
13167	BAYE3-PS150-FCCT-H	120-347	150/130/100	22,500/19,500/15,000
13168	BAYE3-PS240-FCCT-H	120-347	240/200/180	36,000/30,000/27,000
15780	BAYE3-PS150-FCCT-H-WH	120-347	150/130/100	22,500/19,500/15,000
15781	BAYE3-PS240-FCCT-H-WH	120-347	240/200/180	36,000/30,000/27,000

LEGEND KEY					
MODEL	WATTS	COLOR TEMPERATURE	INPUT VOLTAGE	DIMMING	FINISH
LHS1 LH1 LHC1 HBX3 BAYE3	PS - Power Selectable				
	90 - 90W				
	130 - 130W				
	150 - 150W	40 - 4000K			
	160 - 160W	50 - 5000K			
	200 - 200W	FCCT - Field Color Selectable			
240 - 240W	3500K/4000K/5000K for BAYE3				
300 - 300W	4000K/5000K for LHS1, LH1, HBX3				
320 - 320W			U - 120-277V		
440 - 440W			H - 120-347V		
			V - 277-480V	DIM - 0-10V	[Blank] - Black WH - White

Note: Not all combinations in the legend key are available. Please view spec tables on page 6 and 7 to configure available combinations.



**SIMPLIFIED  
INVENTORY  
MANAGEMENT**



**EASE OF FINDING  
PRODUCT  
INFORMATION**



**HASSLE FREE  
INSTALLATION**



**IDEAL FORM, FIT  
& OPERATION**



**TAILORED  
SOLUTIONS**



**REBATES**



**RELIABILITY &  
LONG LIFE**



**5 YEAR/  
EXTENDED  
WARRANTIES**

EiKO Global, LLC.

World Headquarters: 18000 W. 105<sup>th</sup> Street, 3<sup>rd</sup> Floor, Olathe, KS 66061 1.800.852.2217  
Head Office, Canada: 7900 Goreway Dr Unit 8, Brampton, ON L6T 5W6 1.888.741.2673

Rev. October 18, 2024